

GREATER ST LUCIA WETLAND PARK

KOSI BAY NODE



KwaDapha Lake and Bhanga Nek Beach Sites



GREATER ST LUCIA WETLAND PARK

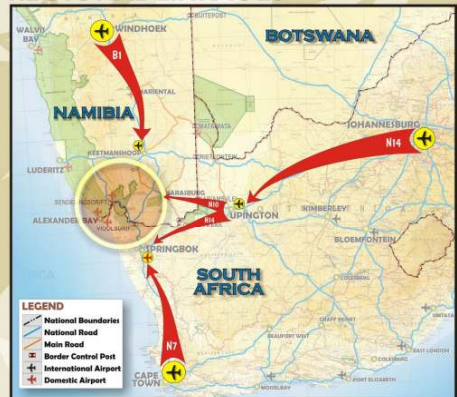


ST LUCIA NODE

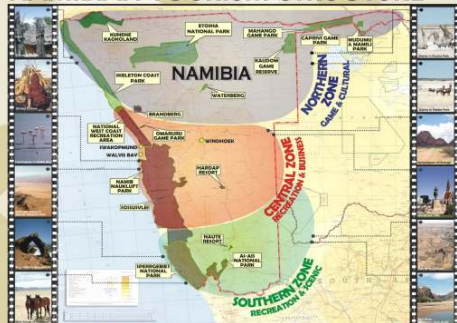
LOCALITY



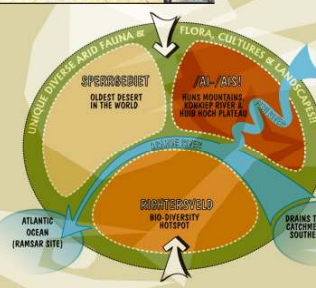
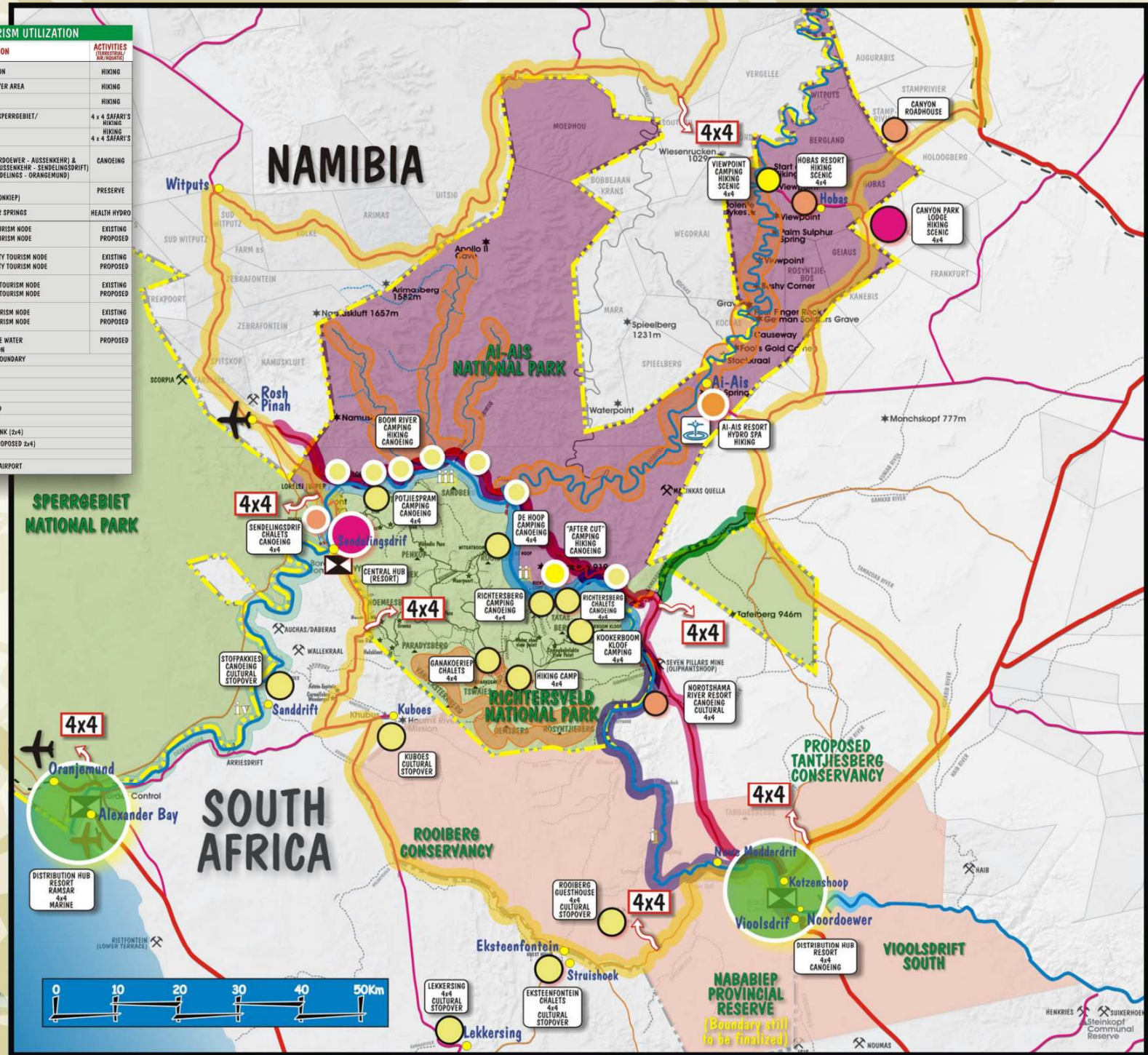
REGIONAL LINKAGES



NAMIBIAN TOURISM STRUCTURE



TOURISM UTILIZATION		
SYMBOL	DESCRIPTION	ACTIVITIES (TYPICALLY NOT ADJACENT)
	FISH RIVER CANYON	HIKING
	ROOM / NAIB RIVER AREA	HIKING
	RICHTERSVELD / SPERRGEBIET / TAFELBERG	4 x 4 SAFARI'S HIKING
	CONSERVANCY	HIKING 4 x 4 SAFARI'S
	ORANGE RIVER (SECTION II - NOORDOEWER - AUSSENKEHR) & (SECTION II - II AUSSENKEHR - SENDELINGSDRIF) (SECTION IV - SENDELINGS - ORANGEMUND)	CANOEING
	WILDERNESS (HUNDSBERG & KONKIEP)	PRESERVE
	AI-AIS HOT WATER SPRINGS	HEALTH HYDRO
	HIGH DENSITY TOURISM NODE	EXISTING
	HIGH DENSITY TOURISM NODE	PROPOSED
	MODERATE DENSITY TOURISM NODE	EXISTING
	MODERATE DENSITY TOURISM NODE	PROPOSED
	MEDIUM DENSITY TOURISM NODE	EXISTING
	MEDIUM DENSITY TOURISM NODE	PROPOSED
	LOW DENSITY TOURISM NODE	EXISTING
	LOW DENSITY TOURISM NODE	PROPOSED
	POTENTIAL FUTURE WATER BASED RECREATION	PROPOSED
	NATIONAL PARK BOUNDARY	
	BORDER POST	
	NATIONAL ROAD	
	MAIN ROAD	
	SECONDARY ROAD	
	RING ROAD (2x4)	
	ORANGE RIVER LINK (2x4)	
	GAMKAP LINK (PROPOSED 2x4)	
	RIVER	
	INTERNATIONAL AIRPORT	



Tourism Development Plan For the Nyika Transfrontier Conservation Area

Goals

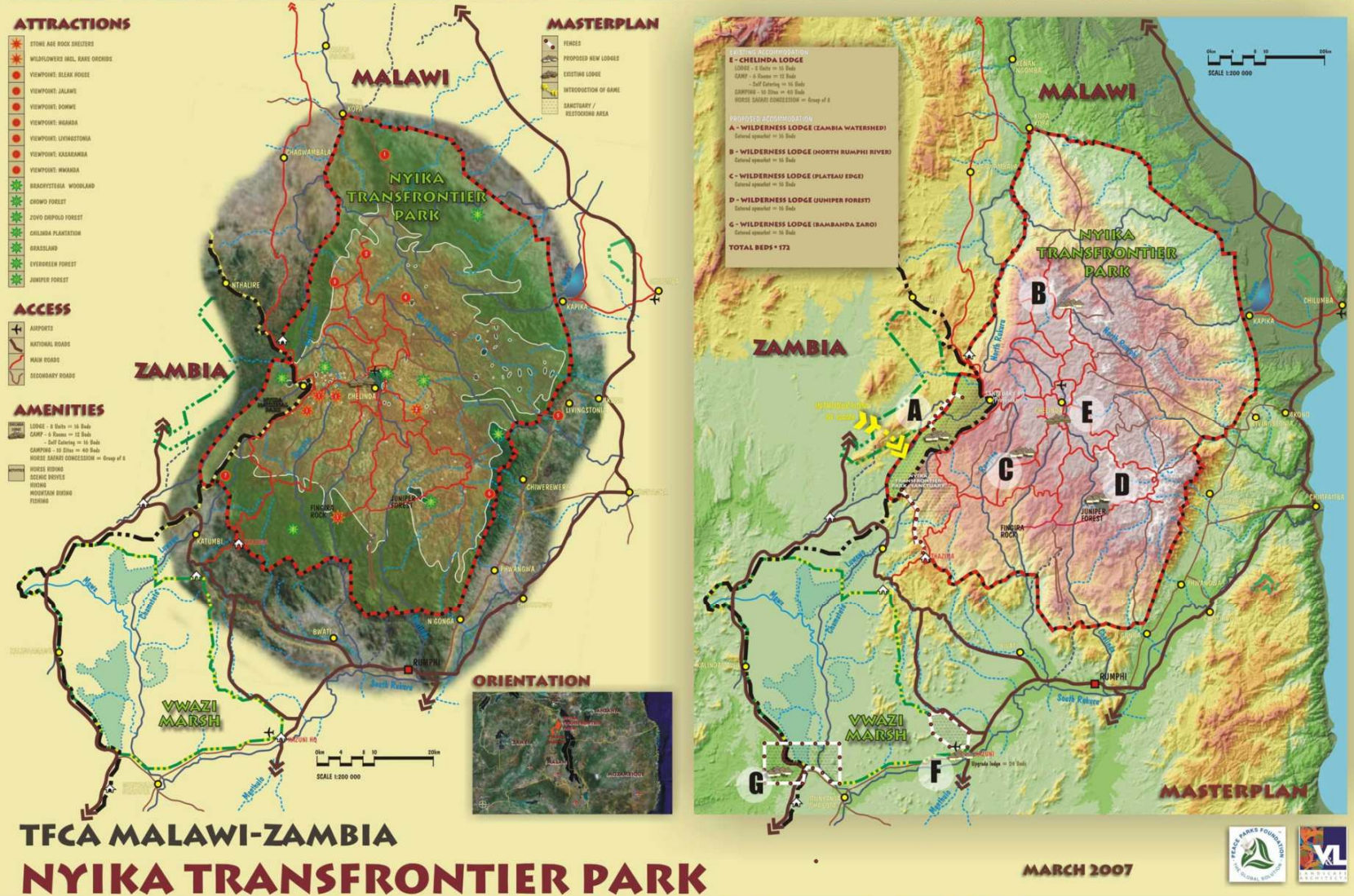
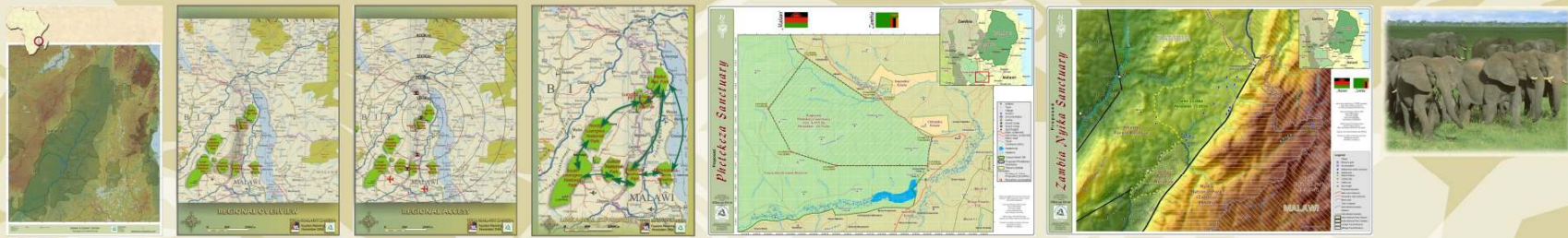
Promote tourism development and growth, promote regional co-operation and socio-economic development in and around the Malawi-Zambia TFCA's

Key objective:

- To prepare an integrated tourism development plan for the Malawi-Zambia TFCA's. The Plan is to be developed as an integral part of the Joint Management Plan currently under preparation. A consultative process through the already established institutional framework should be followed.

General objectives:

- Understand the tourism demand (Potential Market)
- Understand bio-physical supply (Potential Product)
- To identify and prioritise opportunities for tourism development in the region.
- Integrate Supply and Demand so as to maximise tourist experience and optimise socio-economic benefit
- To propose a coherent planning approach to facilitate tourism development in the Malawi-Zambia TFCA
- Identify and prioritise opportunities for tourism development in the region.
- To determine infrastructure requirements in and around the Malawi-Zambia TFCA in line with identified opportunities



Tourism Development Plan for the Nsubane Pongola Transfrontier Conservation Area

The Nsubane-Pongola Transfrontier Conservation and Resource Area is one of five protocol areas that constitute the Lubombo Transfrontier Conservation Area (TFCA). The Lubombo Transfrontier Conservation Area came into being with the signing of a bilateral treaty between the governments of South Africa and Swaziland in March 2000. Recently, the Bi-lateral Task Team for the Protocol agreed that the first phase of the development of the TFCA will be the amalgamation of the Royal Jozini Big Six Project in Swaziland with the Phongola Nature Reserve and the Pongola Game Reserve in South Africa. The inclusion of Mapondwana and Majozini CCA is also contemplated.

The Challenge:
There exists a state of confusion regarding tourism development in the area as a result of an extensive amount of planning within the region spanning the past 7 years much of which has not been implemented.

Unclear and unformalised relationships between the adjacent conservation estates has presented the risk of incompatible development and intercompetition, which has in the past resulted in under-utilisation of resource potential and poor benefit flows local and affected communities.

The aims and objectives of the Nsubane-Pongola TFCA are listed in the protocol. In respect of this study the following aim is highlighted:

Principal Aim of the TFCA in terms of tourism: 'to realise economic returns from tourism and associated activities in the Area.'

Commercialisation of ecotourism facilities in the component conservation estates has been identified as the mechanism for this.

Primary Aim of this study:
Develop an overarching framework to guide the integration of tourism developments in the TFCA to ensure that intercompetition is minimised and that maximum benefit is derived from joint and complimenting commercial operations.

- Objectives of this study:
- Assess the current status of and demand for ecotourism products in the TFCA and the surrounding area within the ecological, cultural and aesthetic carrying capacity of the TFCA and the management and business plans of the three conservation estates.
 - Develop a strategic framework for ecotourism development planning
 - Draft a plan to develop a range of viable ecotourism products for the TFCA, including overnight facilities, recreational activities and other associated facilities or activities
 - Assess and conclude on the viability of the potential developments and ensure that the preferred alternatives are socially, economically and environmentally responsible and sustainable.

Poster 2a: - Data Analysis

Introduction:
Purpose of Report and Executive Summary
Background Information
Key Findings

Attractions:

Attraction	Location	Area	Size (km ²)	Year	Notes
Phongola Nature Reserve	South Africa	Phongola	100	1987	World Heritage Site
Pongola Game Reserve	South Africa	Pongola	100	1987	World Heritage Site
Mapondwana CCA	South Africa	Mapondwana	100	1987	World Heritage Site
Majozini CCA	South Africa	Majozini	100	1987	World Heritage Site
Phongola Nature Reserve	Swaziland	Phongola	100	1987	World Heritage Site
Pongola Game Reserve	Swaziland	Pongola	100	1987	World Heritage Site
Mapondwana CCA	Swaziland	Mapondwana	100	1987	World Heritage Site
Majozini CCA	Swaziland	Majozini	100	1987	World Heritage Site

Access:

Map: Nsubane Pongola Transfrontier Conservation Area

Nsubane Pongola Transfrontier conservation area

Poster 2b: - Data Analysis

Access:

Access & Amenities:

Amenities:

Conservation Mandate:

Opportunities & Constraints:

Map: Nsubane-Pongola TFCA

Poster 3: - Concept Development Plan

Tourism Models:

Current Model (Status Quo):

Ideal Model (Planned):

Map: Nsubane Pongola Transfrontier Conservation Area

Nsubane Pongola Transfrontier conservation area

Poster 3: - Concept Development Plan

Concept:

Access and circulation:

Tourism nodes:

Map: Nsubane Pongola Transfrontier Conservation Area

Nsubane Pongola Transfrontier conservation area

Poster 4: - Tourism Development Plan

Amenities - Existing and Proposed:

Attraction	Development Stage	Accommodation Type	Food & Beverage	Transport	Other
Phongola Nature Reserve	Existing	None	None	None	None
Pongola Game Reserve	Existing	None	None	None	None
Mapondwana CCA	Existing	None	None	None	None
Majozini CCA	Existing	None	None	None	None
Phongola Nature Reserve	Proposed	None	None	None	None
Pongola Game Reserve	Proposed	None	None	None	None
Mapondwana CCA	Proposed	None	None	None	None
Majozini CCA	Proposed	None	None	None	None

Map: Nsubane-Pongola Transfrontier Conservation Area

Component Concept Development Plans:

- ROYAL JOZINI BIG SIX - CONCEPT DEVELOPMENT PLAN
- PHONGOLA LAUNCH - CONCEPT DEVELOPMENT PLAN
- PHONGOLA AIRPORT - CONCEPT DEVELOPMENT PLAN
- PHONGOLA LAUNCH - CONCEPT DEVELOPMENT PLAN
- PHONGOLA AIRPORT - CONCEPT DEVELOPMENT PLAN

Map: Nsubane-Pongola Transfrontier Conservation Area

Nsubane Pongola Transfrontier conservation area

Poster 5: - Implementation Action Plan

Stakeholder Action Projects:

Action Project 1: Finalize agreement between DMFF and EZN Wildlife

Action Project 2: Plan Community Conservation Areas

Action Project 3: Formation of an association of adjacent private landowners

Action Project 4: Formalisation of agreements between Association of Private Landowners and the State

Action Project 5: Secure Perimeter Fence

Action Project 6: Remove internal fences

Action Project 7: Improvement of product

Action Project 8: Marketing and Branding of the TFCA

Action Project 9: Monitor impact of NPTFCO

Action Project 10: Monitor impact of NPTFCO

Map: Nsubane Pongola Transfrontier Conservation Area

Timeline:

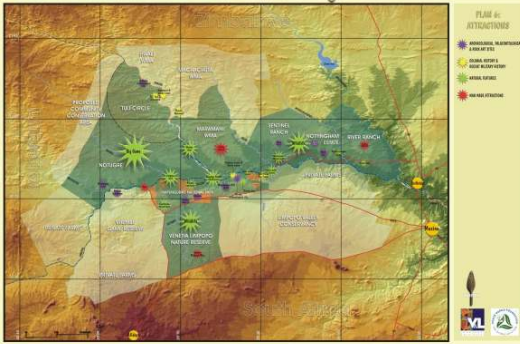
Year	1	2	3	4	5	6	7	8	9	10
Action Project 1										
Action Project 2										
Action Project 3										
Action Project 4										
Action Project 5										
Action Project 6										
Action Project 7										
Action Project 8										
Action Project 9										
Action Project 10										



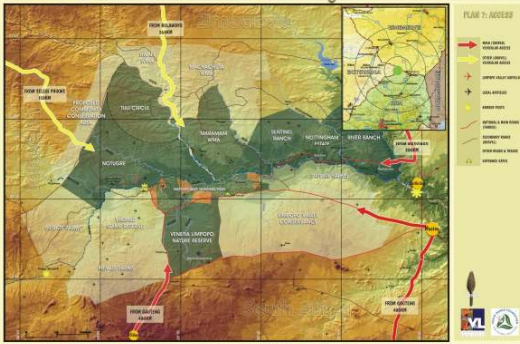
GREATER MAPUNGUSWE TFCA Integrated Tourism Master Plan



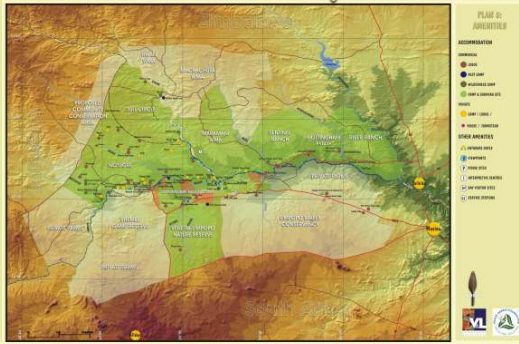
GREATER MAPUNGUSWE TFCA Integrated Tourism Master Plan



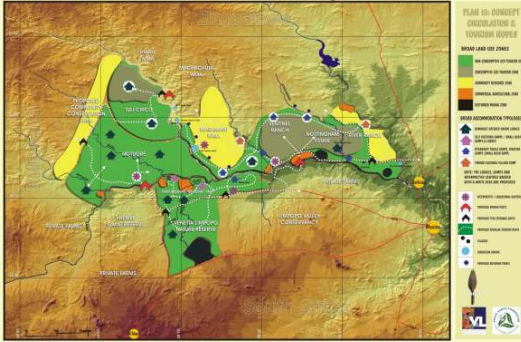
GREATER MAPUNGUSWE TFCA Integrated Tourism Master Plan



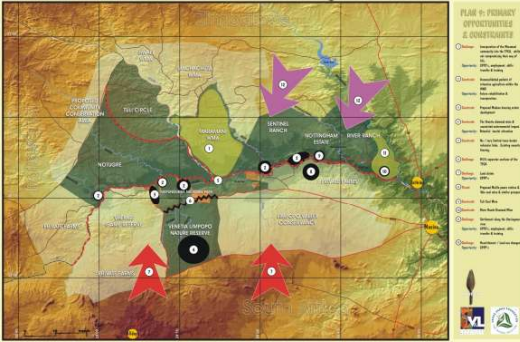
GREATER MAPUNGUSWE TFCA Integrated Tourism Master Plan



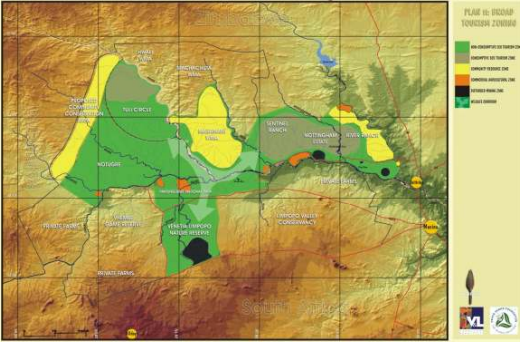
GREATER MAPUNGUSWE TFCA Integrated Tourism Master Plan



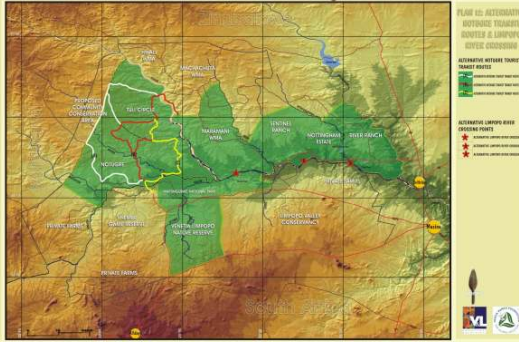
GREATER MAPUNGUSWE TFCA Integrated Tourism Master Plan



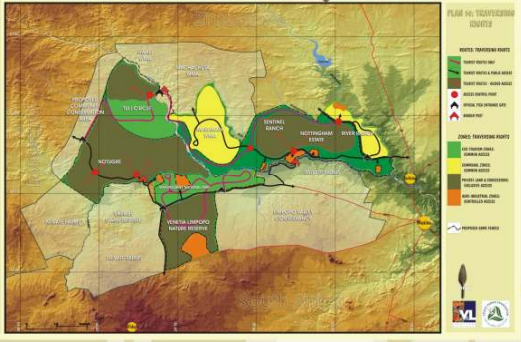
GREATER MAPUNGUSWE TFCA Integrated Tourism Master Plan



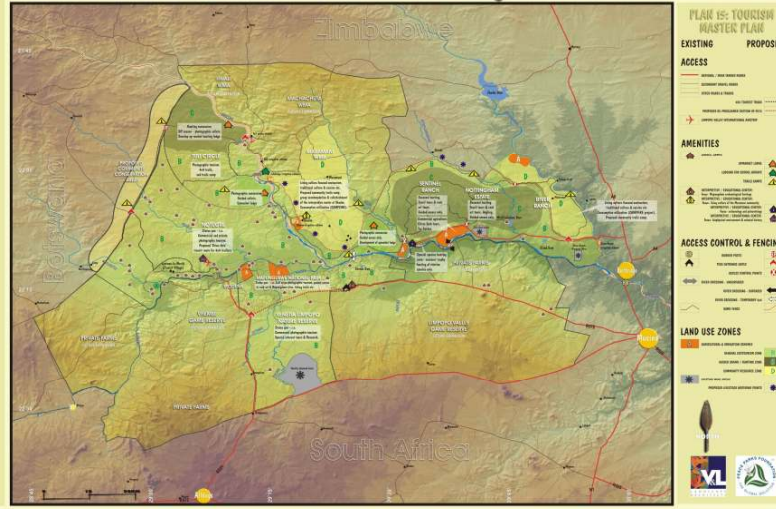
GREATER MAPUNGUSWE TFCA Integrated Tourism Master Plan



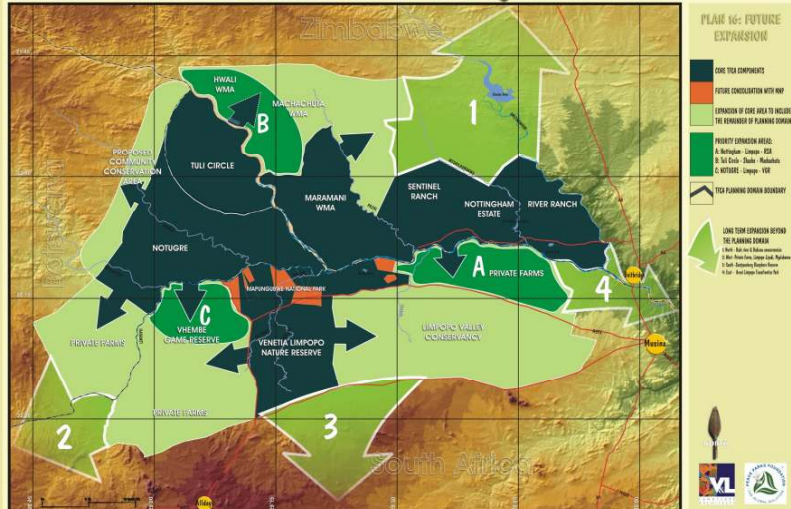
GREATER MAPUNGUSWE TFCA Integrated Tourism Master Plan



GREATER MAPUNGUSWE TFCA Integrated Tourism Master Plan



GREATER MAPUNGUSWE TFCA Integrated Tourism Master Plan



BOUNDLESS SOUTHERN AFRICA

Nature Culture Community

1 TRAIL / 2 OCEANS / 7 TRANSFRONTIER PARKS / 9 COUNTRIES
 30 NATIONAL PARKS & RESERVES / 3 MAJOR RIVER SYSTEMS / 3 RAMSAR SITES / 4 BIOMES / WORLD'S LARGEST INLAND DELTA / WORLD'S SECOND LARGEST CANYON / OLDEST DESERT / LARGEST VEGETATED SAND MANTLE / DIVERSE CULTURES / ABUNDANT GAME AND PLANT SPECIES



/AI-/AIS- Richtersveld Transfrontier Park

A vast mountain desert, /AI-/AIS- Richtersveld Transfrontier Park encompasses the oldest desert in the world and is home to an abundance of beautiful and unique desert flora, the world's second largest canyon, 100 species of birds, hominid sites, sulphur springs and archaeological sites dating back to 90,000 years.

Kgalagadi Transfrontier Park

The largest transect of the Kalahari Desert, Kgalagadi Transfrontier Park is home to the unique Kalahari Lion, the creature, world's fastest animal on land, the world's fastest flying bird, 200 of 60 raptors recorded in Southern Africa, ancient rock art, the traditional Khomani San.

Kavango Zambezi Transfrontier Conservation Area

The largest inland delta in the world, the Kavango Transfrontier conservation area is the world's breathtaking falls, the largest continuous population of African elephant and the highest concentrations of wildlife on the African continent, huge baobab trees, Iron and Stone Age sites, San rock paintings, lagoons, lakes and hidden channels, bungee jumping, kayaking down rapids, helicopter rides and white-water rafting.

Boundless Southern Africa is a union of nine countries that share a great passion for nature, culture and community. It showcases seven unique and extraordinarily diverse transfrontier conservation areas.

A Transfrontier Conservation Area is an area straddling across two or more international borders where the natural and cultural resources are collaboratively managed by the governments or authorities involved.



Greater Mapungubwe Transfrontier Conservation Area

The largest prehistoric population on privately owned land in Africa, Stone Age and Iron Age archaeological sites, remnants of an ancient African civilization, the remains of a centuries old baobab, ancient to modern day rock art, spectacular scenery, San rock paintings, exciting predator trails, 30-metre trees and raging rivers.

Maloti Drakensberg Transfrontier Conservation Area

Spectacular mountains, dramatic escarpments, more than 2500 species of flora, the highest falls in southern Africa, home of the critically endangered bearded vulture, one of the finest outdoor galleries of rock art in the world, some of the most important dinosaur remains on earth, 1,000-year-old rock art, mountain pools, hiking, pony trekking, abseiling the Maatsiyanane Falls, rock climbing, ice scrambling and skiing.

Lubombo Transfrontier Conservation Areas

The Lubombo Transfrontier Conservation Area boasts the highest vegetated dunes in Africa, five ecosystems, the oldest South African heritage site, the greatest diversity of amphibians in southern Africa, a well established population of hippos and crocodiles, giant leatherbark turtles, black and white rhino, leopards, lions, cheetahs and 200 smaller wildcats, a vast array of bird and marine life, and the former home of the rare coelacanth. It is a blend of ancient Zulu kings and warriors, volcanic mountains, archaeological finds and eight-day dancing ceremonies.

Great Limpopo Transfrontier Park

Four landscapes, 1500 years, 8200 inhabitants, 5000 herders, 3000 white rhino, 17000 butterflies, 500 species of birds, 6000 plant species, Stone Age artefacts, Iron Age artefacts, Great Fish meetings, 100 century-old river-aiding, lake-creating, oak-divers, 200-year-old diversity, 8000 gaur.



LUXURY HUNTING ESTATE - EL MAHA FOREST

MAN MADE ENVIRONMENT 1

EL MAHA FOREST
Hunting Estate

April 2006

LIVING ENVIRONMENT 2-2

VEGETATION & SOIL RELATIONSHIP

VEGETATION SURVEY DATA

Vegetation Type	Soil Type	Notes
...

VEGETATION AND SOIL SURVEY POINTS

GAME NUMBERS

Game Type	Count
...	...

EL MAHA FOREST
Hunting Estate

April 2006

PROPOSED ZONING AND CIRCULATION 3

EL MAHA FOREST
Hunting Estate

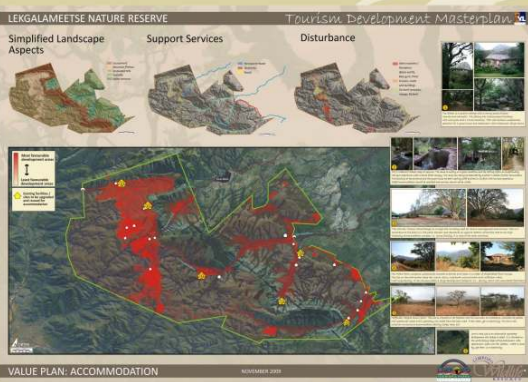
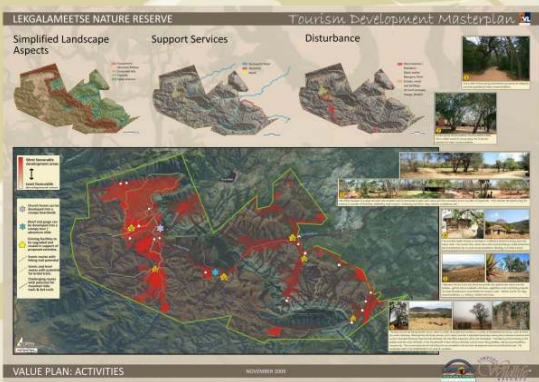
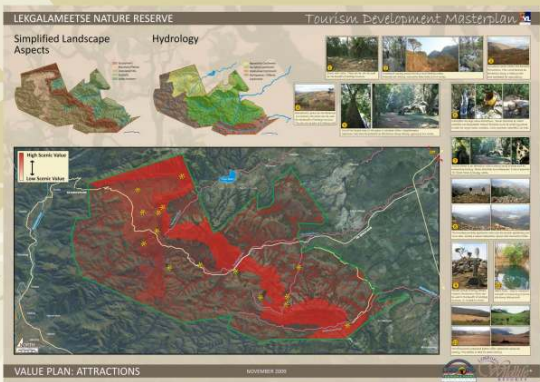
April 2006

7. PROPOSED DEVELOPMENT MASTER PLAN (Cont.) Page 21

EL MAHA FOREST
Hunting Estate

April 2006





LEKGALAMEETSE NATURE RESERVE Tourism Development Masterplan



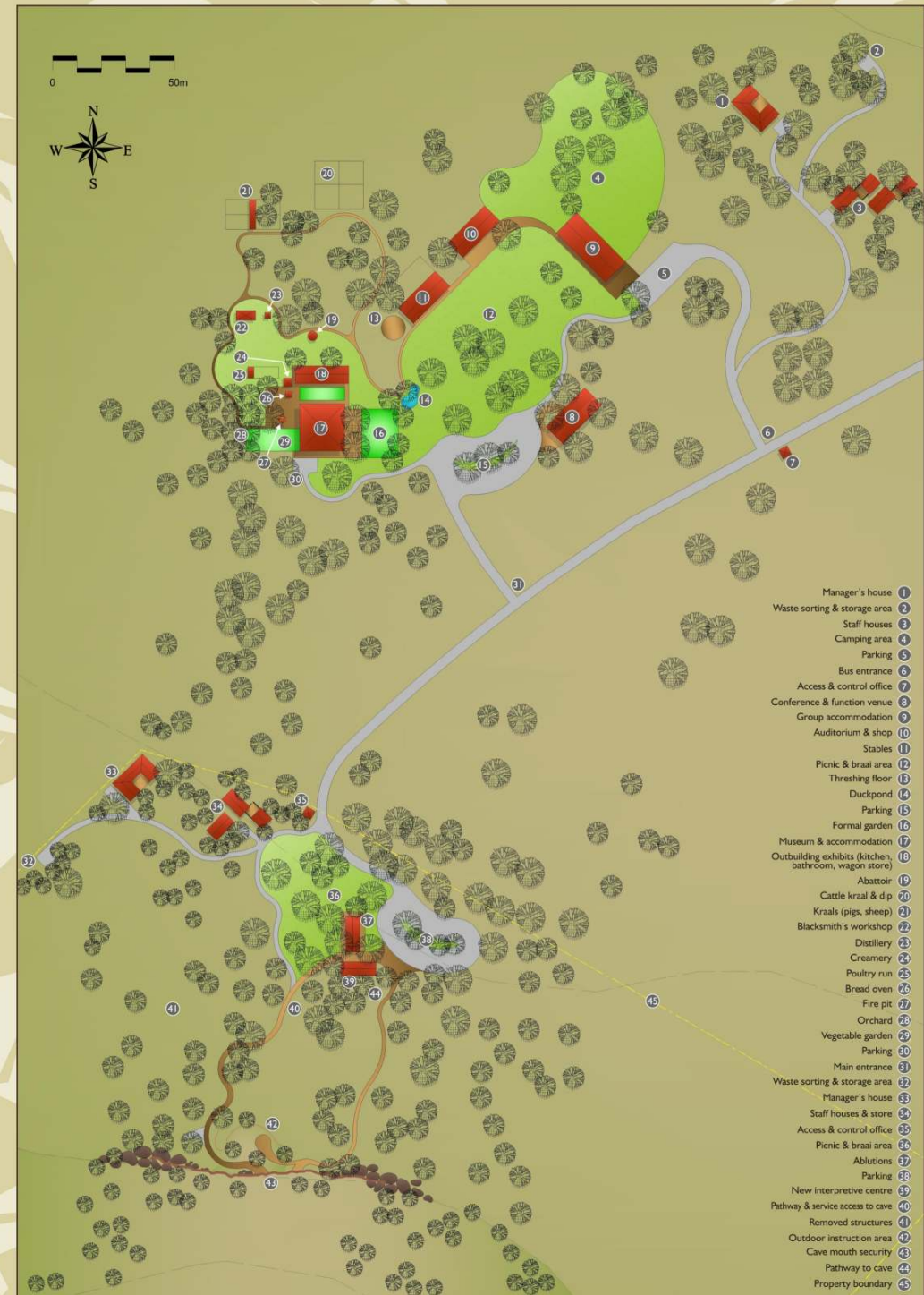
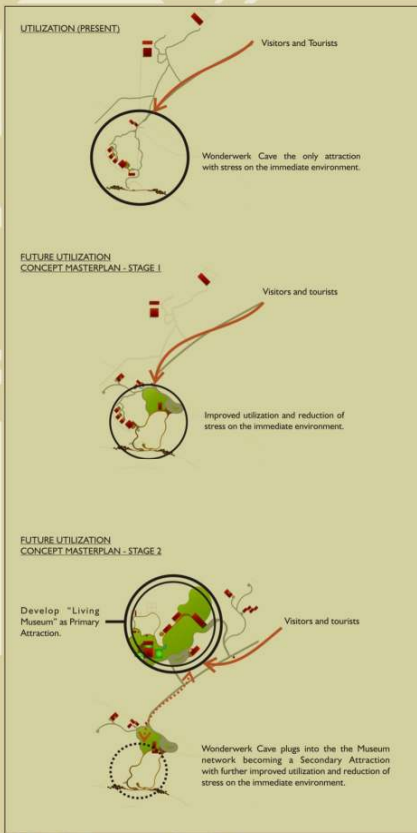
MASTERPLAN

NOVEMBER 2009





Wonderwerk Cave is a project focussing on the development of the tourism and educational potential of the Wonderwerk Cave site in the Western Cape. V&L proposed rehabilitation of the existing infrastructure and the development of a new section of the site into a living museum. Incorporated into the project are facilities for accommodation, conferences and outdoor education. It is envisaged that the two sections of the proposal will work holistically to draw an increased number of tourists and to educate people in the history and culture of the Cave and of the Griquas who live in the Western Cape.



National Orientation

Limpopo Province - Comparative advantages

- Rich in wildlife, scenic landscapes, culture & history
- Strongly branded as a tourism destination
- Government committed to supporting tourism
- Gateway for African arrivals

Provincial Orientation

Waterberg Comparative advantages

- Malaria free area
- Closer to Gauteng and JHB (4h Airport than competitors)
- Unique combination of big 5 and spectacular scenery
- Rapidly growing brand awareness
- Prestigious image attached to Biosphere Reserve status
- Doorndraai dam Nature Reserve is less than 2 & 1/2 hours from JHB International Airport

Consolidation Concept & Linkages

Vision for Expansion

Medium Term Consolidation

Create large open conservation area by amalgamating Entabeni Private Game Reserve and Doorndraai Nature Reserve, through adding the Schasphok Property to Doorndraai.

Long Term Consolidation

Ultimately create a mega game reserve - expand southwards to Marakale & Welgevonden and northwards to Moepe, Touchstone & Lapalala.

The realisation of this vision will give the Waterberg Biosphere the awareness it deserves, where Doorndraai serves as the "Gateway to the Biosphere".



A Greater Doorndraai Dam - Entabeni Nature Reserve

Main Complex section



Lodge Unit Section



Concept Layouts

Proposed Style and Aesthetics for the Development Nodes on the western side of Doorndraai dam.

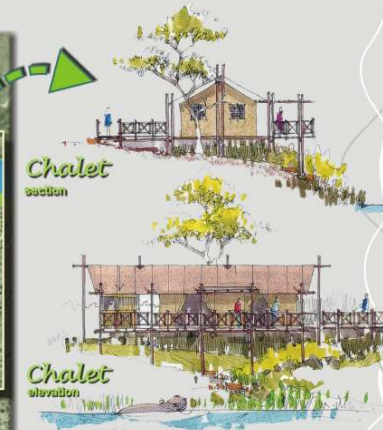
The Lodge development close to the Sterk River inlet, consisting of a Main Complex, (4 x 4 bed) & (1 x 2 bed) Units.

The Self Catered Chalets development on Doorndraai Dam embankment. Consisting of (4 - 6 bed) x 10 Units.

Main Complex Elevation



Lodge Unit Elevation



A Greater Doorndraai Dam - Entabeni Nature Reserve

Linking Concept

Proposed Linkage

Development & Utilization Concept

- SCHEMATAK (POSSIBLE NEW ADDITION)
- ENTABENI GAME RESERVE (PRIVATE)
- DOORNDRAAI DAM NATURE RESERVE (PROVINCIAL RESERVE)
- DOORNDRAAI DAM NATURE RESERVE (PROVINCIAL RESERVE)
- LINKAGES OF ENTABENI & DOORNDRAAI

Existing Utilization



- ENTABENI GAME RESERVE (PRIVATE)
- DOORNDRAAI DAM NATURE RESERVE (PROVINCIAL RESERVE)
- DOORNDRAAI DAM NATURE RESERVE (PROVINCIAL RESERVE)
- PROVINCIAL ROADS

- DEVELOPMENT NODES
- BIG FIVE ZONE
- NON BIG FIVE ZONE
- DOORNDRAAI DAM
- PROVINCIAL ROADS

A Greater Doorndraai Dam - Entabeni Nature Reserve

V&L were appointed by Limpopo Tourism & Parks in 2005 to develop a tourism plan for Doorndraai Nature Reserve. This documentation was used to interest private developers to invest in Limpopo Parks in order to create a private partnership with a governmental institution. A successful partner was identified in 2007 and Limpopo Tourism & Parks appointed V&L to develop a tourism plan to link Entabeni Nature Reserve with Doorndraai dam Nature Reserve and indicate possible expansions.



PHASE 2: (MEDIUM TO LONG TERM)

EXPANSION OF EXISTING TOURIST OPERATION

- The aim of this phase will be **(as phase 1 progressively achieve increased tourism demand)** to expand the tourist operations in order to ultimately unlock the total tourism potential of Riemvasmaak.



... 4x4 driving ... mountain biking ... adventure racing ... events ... canoeing ... fishing ... birding ... hiking ... rock climbing ... photo safaris ... game viewing ...

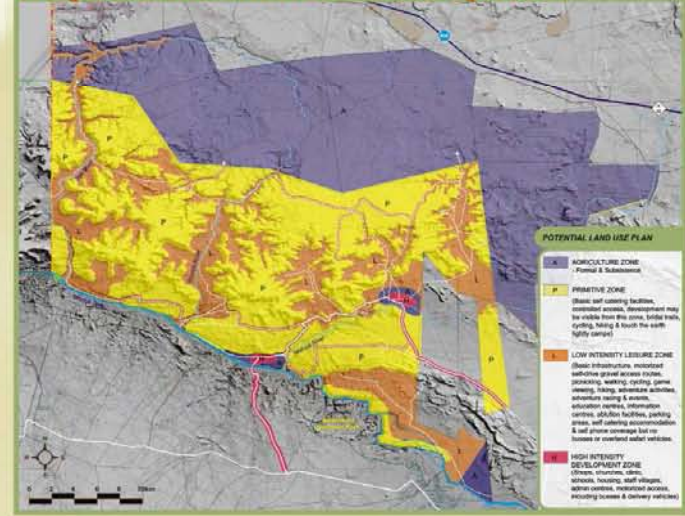
ATTRACTIONS...

- Utilize the Augrabies falls
- Utilize Dry falls
- Utilize the Orange River
- Optimize the Cultural historical experience
- Improve the scenic landscape experience through gradually removing of livestock units out of primitive and low intensity zones.

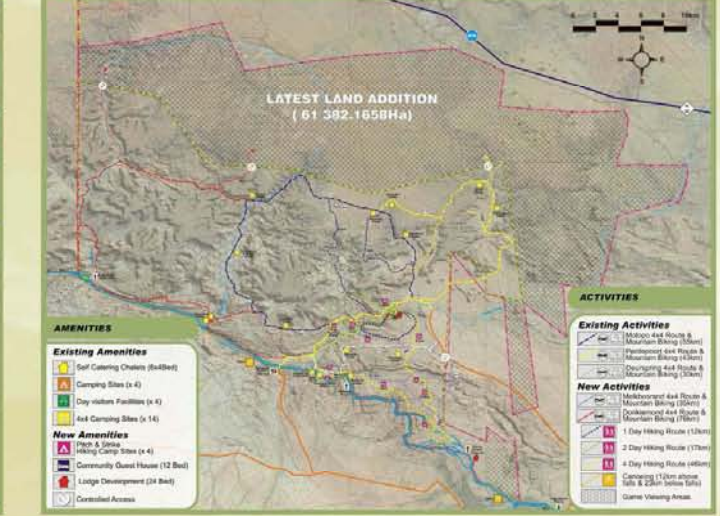
ACCESS...

- Maintain the Primary access road to Riemvasmaak (Sending)
- Maintain the 4x4 routes
- Improve tourism access control
- Add tourism signage at all entrances and all activity routes
- Investigate tourist access from the N10 (Main Road between Namibia and South Africa)

... potential land use plan



... potential amenities & activities



... ACTIVITIES

- Increase activities to include:
- 4x4 driving
 - guided tours
 - mountain biking
 - adventure racing
 - events
 - canoeing
 - fishing
 - birding
 - hiking
 - rock climbing
 - photo safaris
 - game viewing

... AWARENESS

- Brand and market as stand-alone product as well as part of the bigger Northern Cape Tourism "Picture"



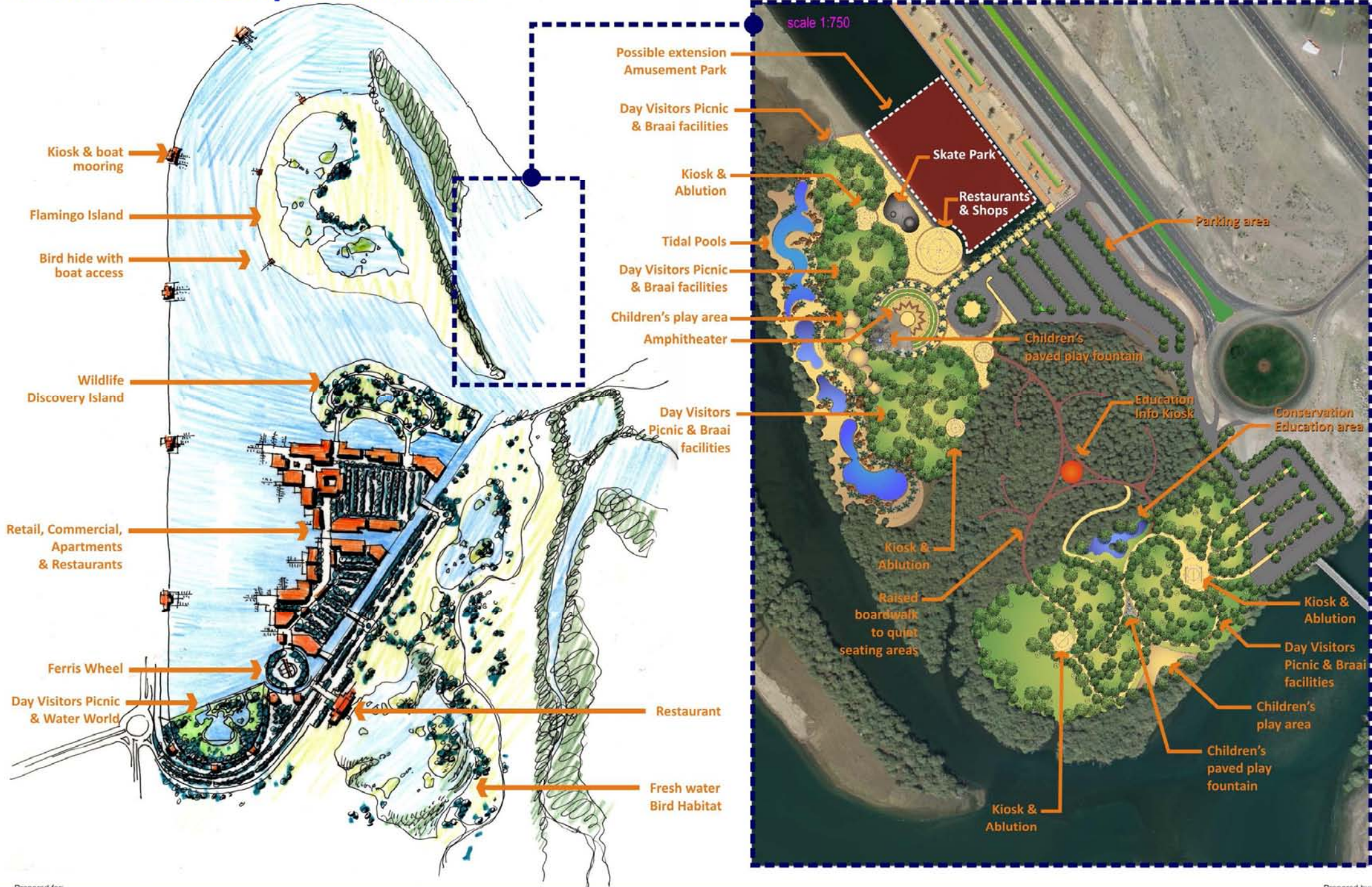
AMENITIES ...

... upgraded hot spring facilities ... 6 x 4 bed self catering chalets ... 4 x camp sites ... 14 x basic camp sites for 4x4 routes ... 4 x pitch & strike hiking sites ... & potential lodges ...



POTENTIAL TOURISM EXPANSION . . .

Marina Development Area



Prepared for:



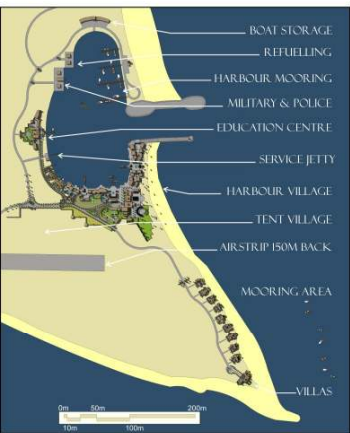
SHARJAH - KHOR KALBA MASTER PLAN DEVELOPMENT

Prepared by:





ISLAND PLAN



CONCEPT PLAN



VILLAS



HARBOUR VILLAGE





VILLA



VILLAS TOWARDS HARBOUR VILLAGE



AMPHITHEATRE



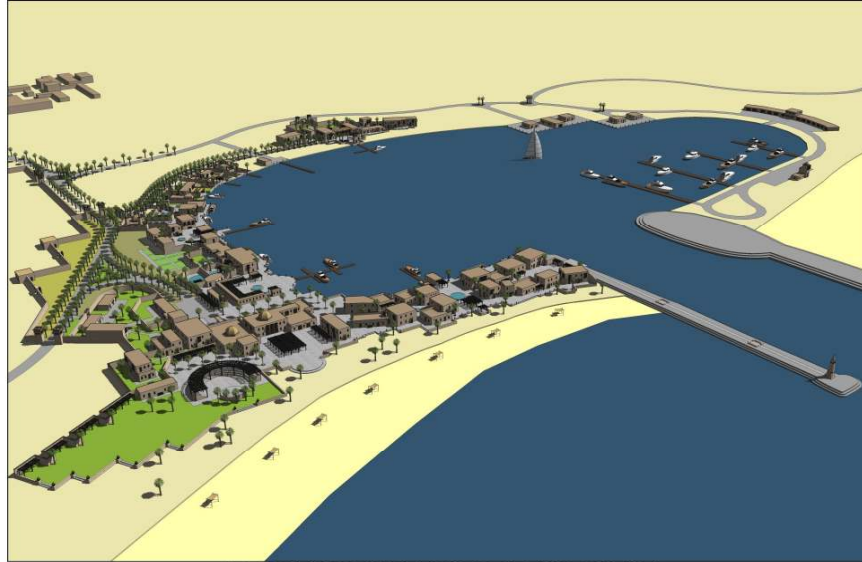
ALLEY



MUSEUM



MOSQUE



NORTH-WEST BIRDS EYE VIEW



SOUTH-EAST BIRDS EYE VIEW



APARTMENTS & ROOMS



SOUK



RESTAURANT & CONFERENCE



SELF CATERING APARTMENTS



EDUCATION CENTRE TOWER



EDUCATION CENTRE SQUARE



SIR BU NAIR TOURISM DEVELOPMENT